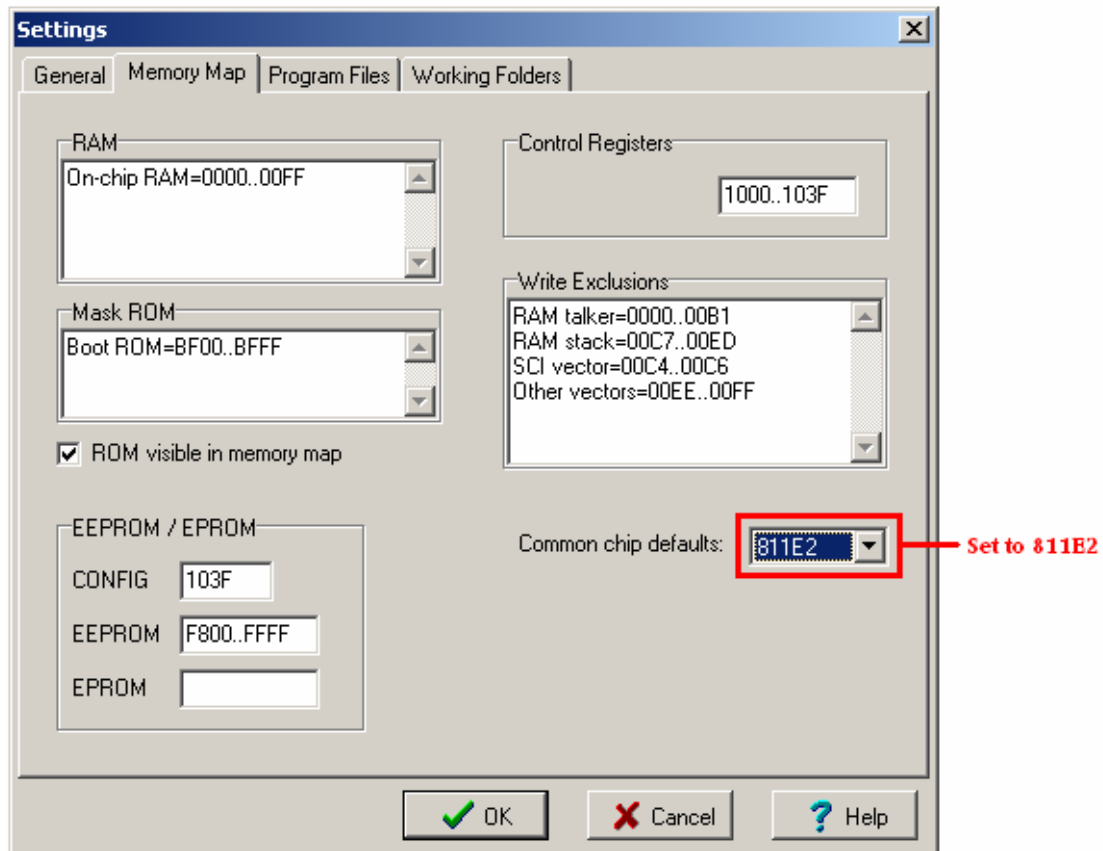
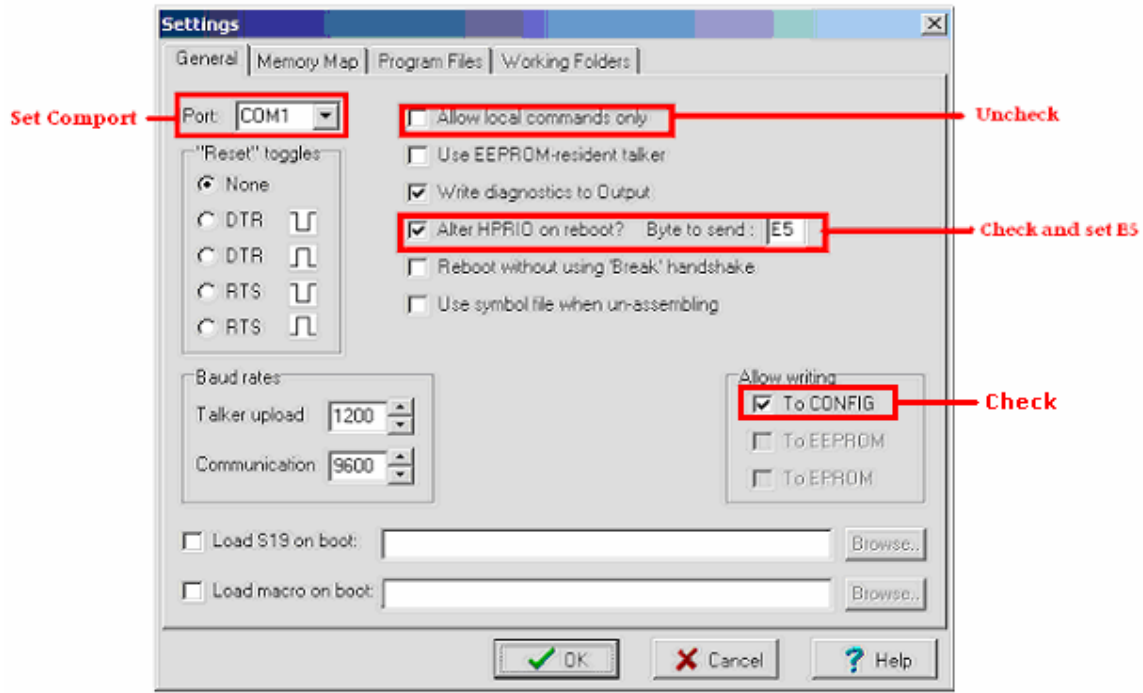


Getting started with JBug11 and Adapt11

Jbug11 is a Windows-based PCBug11 replacement. Jbug11 permits the editing of memory and registers as well as debugging and disassembly of an onboard program. Before you can start using Jbug11 with your Adapt11, you need to configure Jbug11 for use with a M68HC811E2. To do this you need to go to the Settings⇒Settings and then go to the **Memory Map** tab. Then under **Common chip defaults** select **811E2**.



On the **General** tab uncheck **Allow local commands only**, check **Allow writing To CONFIG**, and don't forget to change the **Port** to the correct comport connect to your Adapt11.



Next thing to do is to set the Talker and the Map file. To do this you need to go to the **Program Files** tab. For the 8MHz version of Adapt11 you need to pick the **JBug_Talk_E**. The Map file is called **JBug_Talk_A.map**

Take note that external EEPROM cannot be programmed/modified with Jbug11 or Pcbug11, but you can use the MD command to display its content.

To restore the Config register back to factory settings for an 68HC811E2

Once you are done setting up JBug11 connect your Adapt11 to the com port and move SW2 to BOOT. After resetting the board, you should see a blue progress bar at the bottom of the JBug11 window as the talker is loaded into RAM. It is a 2 step process to edit the Config register. First step is to turn off the write protection on the Config register by setting Bprot to 0F. Type

R bprot=0F

Then to set the Config register type

R config=0D

Misc information about JBug11

To change any register use the R command and its name. For example, to turn on the LED on PA6 use **R porta=40**.

The manual for JBug11 is very complete and very helpful. There is also a discussion group about JBug11. Refer to the Support section of the TechnologicalArts website for the link.

Technological Arts, 819-B Yonge St., Toronto, Ontario, Canada M4W 2G9
Toll-free: 1-877-963-8996 (USA and Canada) Phone: (416) 963-8996 Fax: (416) 963-9179
www.technologicalarts.com
©2002 [Technological Arts](#)