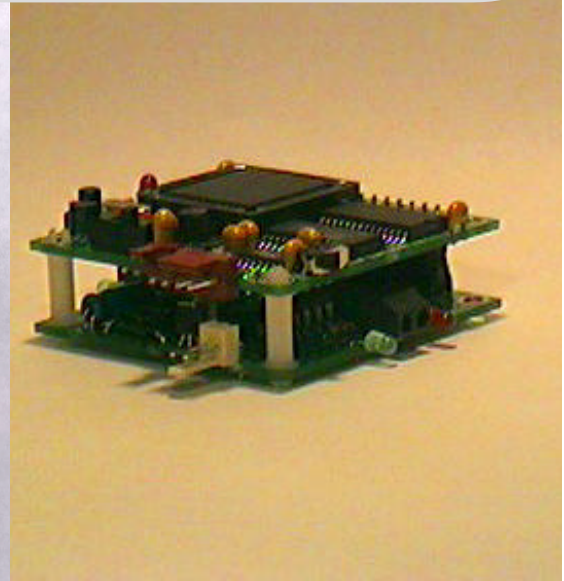
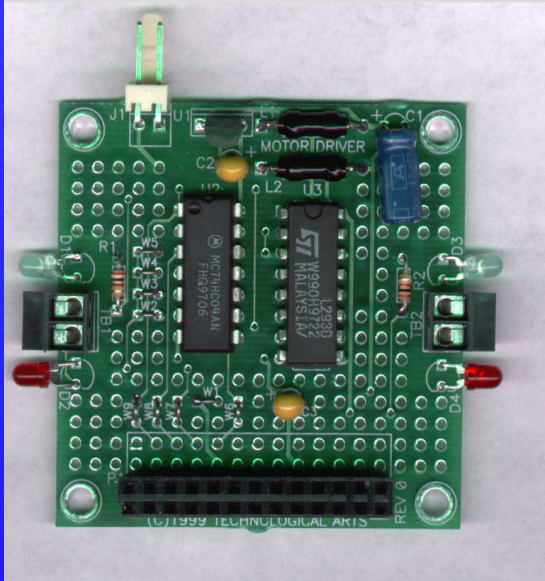


TECHNOLOGICAL ARTS

MicroCore-11 2-Channel Motor Driver Module



The **MicroCore-11™ Motor Driver Module** is one of a range of versatile, low-cost application cards designed for the **MicroCore-11™ 68HC11** microcontroller module.

The motor driver module provides a good mix of features, low cost, and flexibility that make it a good choice in applications incorporating miniature DC or stepper motors. Two channels are provided, supporting either two DC motors or one bi-phase stepper motor. A second module can be added to double the number of available channels.

A prototyping area is provided for user circuitry, such as IR emitters, IR sensors, and bumper switch circuits. In addition, there are four spare logic inverters available to the user. The devices mentioned are typically used to implement micro mouse robot applications.

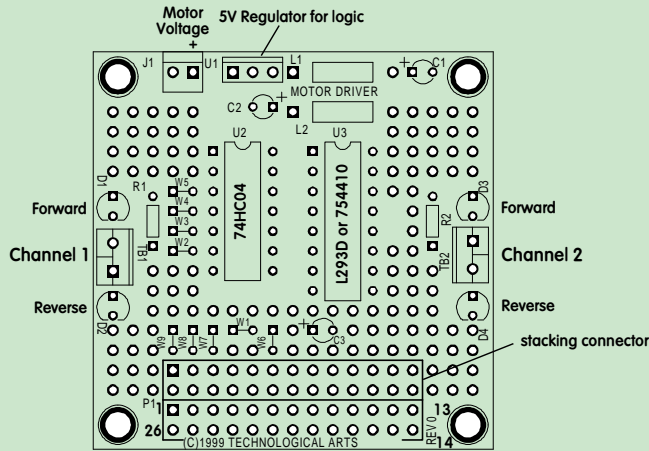
FEATURES:

- 2 channels, offered in 600mA (standard) or 1Amp (high-current) per channel
- heatsinked driver chip for maximum current
- built-in diode protection
- separate motor supply voltage connector
- works with motor voltages from 5V to 36V
- indicator LEDs for direction and status
- prototyping area for user circuits
- screw-terminal blocks for motor connections
- four spare logic inverters for user applications
- modules cascadable for additional channels
- jumper-selectable control port pin assignments
- stackable connector arrangement
- on-board 5V low-dropout regulator
- inductor-isolated logic supply can also power MicroCore-11™ MCU module (jumperable option)
- standard 26-pin I/O connector pattern
- available with several connector options
- stackable vertically or horizontally
- compatible with MicroCore-11™ prototyping cards and backplanes
- compact 2" by 2" modular design
- convenient corner mounting holes

26 Scollard Street
Toronto, Ontario
Canada M5R 1E9
Phone: (416) 963-8996
Fax: (416) 963-9179
www.technologicalarts.com
techart@interlog.com

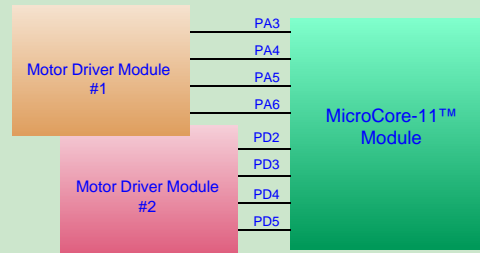
**Technological
Arts**

Mechanical Layout & Pin Numbering



Note:
Square pad is Pin 1, all components

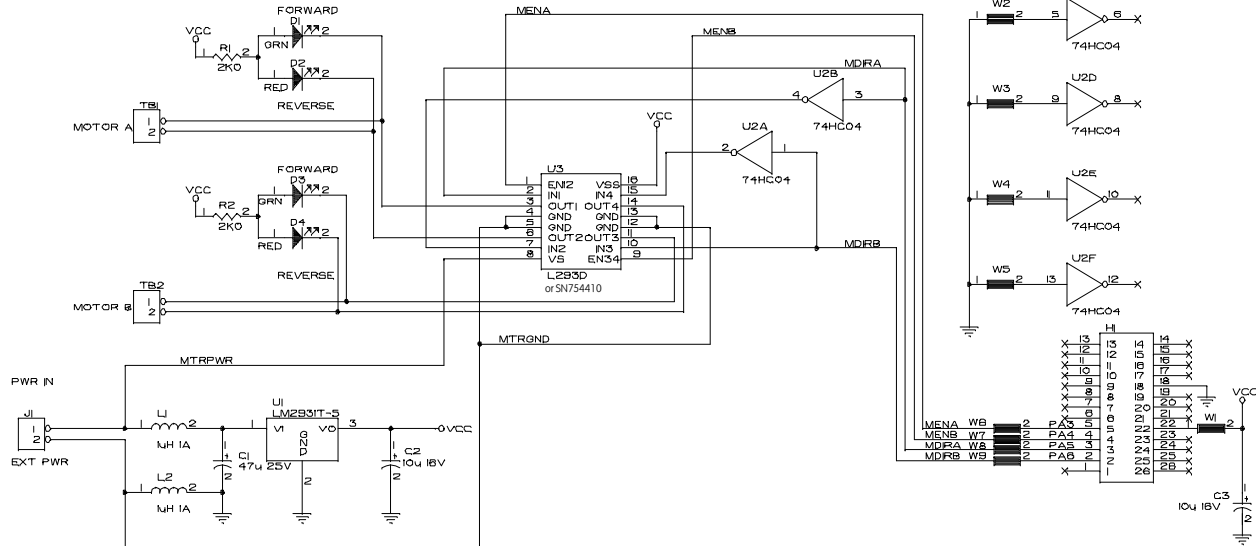
Example of 4-Channel Arrangement



Order Codes:

Standard version (600 mA per channel): MC11MDM-□
High-current version (1Amp per channel): MC11MDMH-□
(fill in connector option code)

Schematic Diagram



Standard Connector Options

